

**OHIO / KENTUCKY**

10737 MEDALLION DRIVE  
SUITE A  
CINCINNATI, OH 45241  
866.514.TURF PHONE  
513.874.8843 FAX

**INDIANA**

1714 EAST PLEASANT  
NOBLESVILLE, IN 46060  
866.424.TURF PHONE  
317.776.7897 FAX

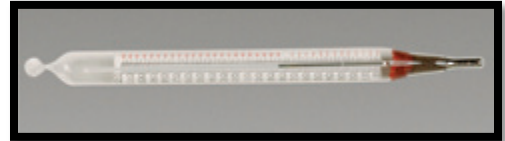
**MICHIGAN**

25125 TRANS-X  
NOVI, MI 48376-0605  
800.555.8189 PHONE  
248.349.0406 FAX

## Club Car Tools

### Battery Thermometer

Mercury filled thermometer for use during battery testing, used to temperature correct specific gravity reading of hydrometer.



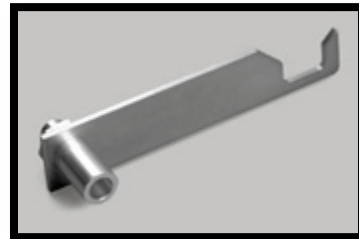
### Battery Watering Gun

Topping off batteries after a charge is the most important job a fleet maintenance technician can perform to assure proper battery performance. It is also the most time consuming and often neglected job. Batteries that are over or under filled can reduce the life span of the battery pack significantly. This custom designed battery watering gun has the following features - Automatic shut-off to stop overfilling. Curved neck allows access to all cells. Fixed depth to prevent damage to plates. Acid resistant materials stands up to harsh conditions. Comfortable pistol grip handle with fingertip trigger control. Quick disconnect allows gun to hook up to a de-ionizer/filtration system or garden hose.



### Clutch Alignment Tool

The clutch alignment tool is required for use with all pre-unitized powertrain gas vehicles. Proper alignment is necessary to minimize belt wear and for optimal vehicle speed.



### Communication Display Module

Used for determining energy unit consumption data of battery pack, for proper fleet rotation. Also displays charging errors stored in On Board Computer (OBC).



**OHIO / KENTUCKY**

10737 MEDALLION DRIVE  
SUITE A  
CINCINNATI, OH 45241  
866.514.TURF PHONE  
513.874.8843 FAX

**INDIANA**

1714 EAST PLEASANT  
NOBLESVILLE, IN 46060  
866.424.TURF PHONE  
317.776.7897 FAX

**MICHIGAN**

25125 TRANS-X  
NOVI, MI 48376-0605  
800.555.8189 PHONE  
248.349.0406 FAX

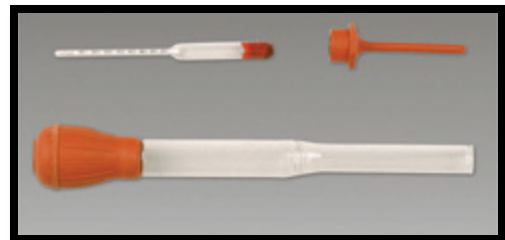
**Continuity Tester**

Basic test tool, requires 2 AA batteries for testing electrical wiring. Includes test lead, and light bulb.



**Hydrometer**

Used for testing electrolyte specific gravity in battery cells. Kit includes hydrometer, vacuum bulb, and acid resistant rubber nipple to minimize damage to plates.



**Safety Seal Professional Tire Repair Kit**

This is the original self-vulcanizing tire repair kit designed for service trucks, maintenance shops, and golf courses. Used by the military, US Post Office, major rental car companies, and service stations, this product produces a permanent tire repair in 10 seconds without the use of cement. Kit includes: patented insertion tool, heavy duty spreader probe, spare needle, special lube (not petroleum jelly or silicone), allen wrench, 30 permanent self vulcanizing Safety Seal Cords and blades to trim excess cord.



**AM10752** Complete kit

**AM10767** 60 refill Safety Seal cords

**AM10769** Insertion lube

**AM10768** Replacement needle

**Steering Wheel Puller Tool**

Club Car patented design for the removal of Club Car and competitor steering wheels. Constructed of high tensile steel with a zinc di-chromate finish for rust resistance.



**OHIO / KENTUCKY**

10737 MEDALLION DRIVE  
SUITE A  
CINCINNATI, OH 45241  
866.514.TURF PHONE  
513.874.8843 FAX

**INDIANA**

1714 EAST PLEASANT  
NOBLESVILLE, IN 46060  
866.424.TURF PHONE  
317.776.7897 FAX

**MICHIGAN**

25125 TRANS-X  
NOVI, MI 48376-0605  
800.555.8189 PHONE  
248.349.0406 FAX

**Tachometer**

This new design tachometer is a must have for working on any internal combustion engines. Unlike our prior model, this unit will work on diesel engines (with the optional diesel lead), as well as 2 and 4 stroke gasoline engines. Features include: Single or double spark systems in Gas mode, or number of cylinders in Diesel mode. Min/Max RPM data capture.

**AM10753** Tachometer, gas test lead, instructions

**AM10771** Diesel test lead

**AM10770** Replacement gas lead



**Tire Repair and Inflation Kit**

Have you ever been stranded away from home with a flat tire? Instead of having to leave the vehicle behind and walk home, now you can be driving in about 10 minutes. Designed to repair our golf car and utility vehicles this kit can be stored on your vehicle until needed. This kit contains: T-handle tool to clean the hole and insert the repair strings. 5 self vulcanizing repair strings which dont require glue that can dry out. 3 CO2 cartridges which are enough to fill any of our tires, and the inflation "chuck". All are sealed in a weather proof bag, inside a black carrying case.

**AM10763** Tire Repair Kit

**AM10765** 6 pack of replacement CO2 cartridges



**Warning Signs**

In response to inquiries about wearing signage to promote safer play, Club Car offers these signs. Each sign is 11" x 7" x .040" thick aluminum that is screen printed with safety orange paint including a UV protectant. Each are pre-punched with mounting holes for ease of installation.

**S9911211** Sharp turn left

**S9921211** Sharp turn right

**S9931211** Steep Hill

